

ELECTRICAL GAUGES

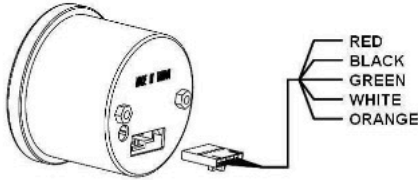
Daytona Vintage Series AMBER RED & SUPER WHITE LED DISPLAY

(270° SCALE)

Tachometer

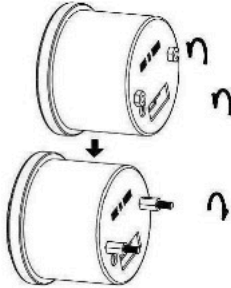
AUTO CALIBRATION

1

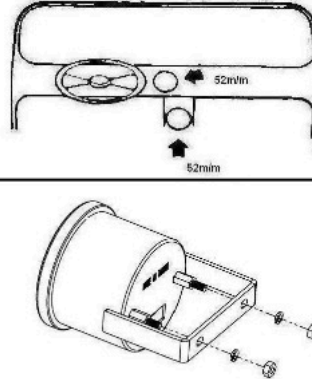


RED - TO IGNITION SWITCH 12V(+)
BLACK - BATTERY (-)
GREEN - ON STANDARD IGNITION GREEN WIRE ATTACHES TO COIL NEGATIVE (-)
WHITE - NOTE
ORANGE - NOTE

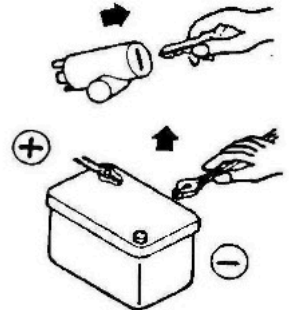
2



3

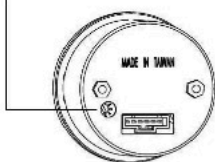


4



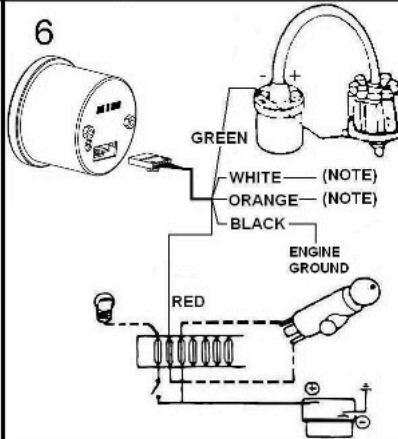
5

CYLINDER SELECTION SWITCH



1. Selecting Number of Cylinders:
Setting the tachometer for 4, 6 or 8 (4, 6 or 3) cylinder operation is achieved simply by sliding the switch, located on back of the tachometer body, to coincide with the appropriate number of cylinders of the engine.
2. Switch position:
0=10 cylinders, 1=1 cylinders, 2=2 cylinders
3=3 cylinders, 4=4 cylinders, 5=cylinders.....
3. When setting the number of cylinders for a rotary engine, set the cylinders number selection to 4 cylinders for 2 rotors, and to 6 cylinders for 3 rotors.
4. The red or black wire MUST be removed before adjustment to the cylinder setting is made from the cylinder selector switch.

6



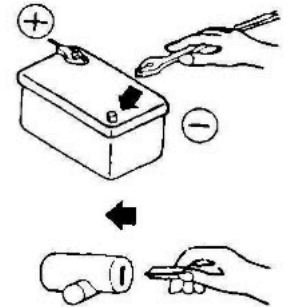
7

NOTE: GAUGE REQUIRE FUNCTION

Lighting Diagram

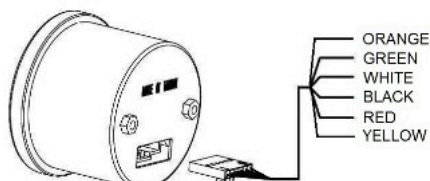
Day Time	Night Time	Installation
White	White	White - Connect to acc. Power Orange - Do not connect
Amber	Amber	Orange - Connect to acc. Power White - Do not connect
White	Amber	White - Connect to acc. Power Orange - connect to parking lamp
Amber	White	Orange - Connect to acc. Power White - connect to parking lamp

8



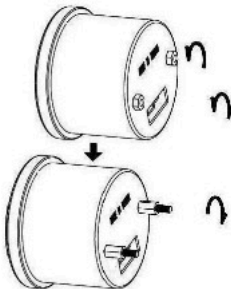
Clock

1

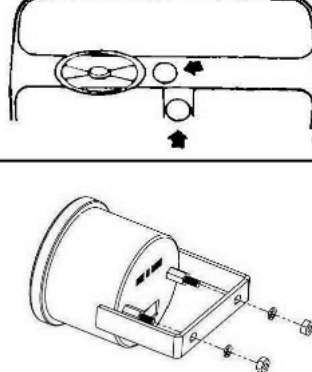


RED - TO IGNITION SWITCH 12V(+)
BLACK - BATTERY (-)
GREEN - SWITCH
YELLOW - BATTERY (+)
WHITE - NOTE
ORANGE - NOTE

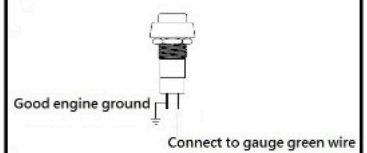
2



3



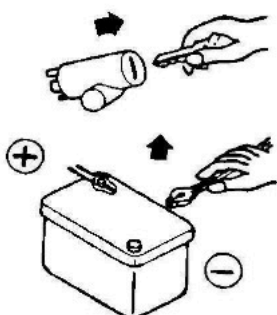
4



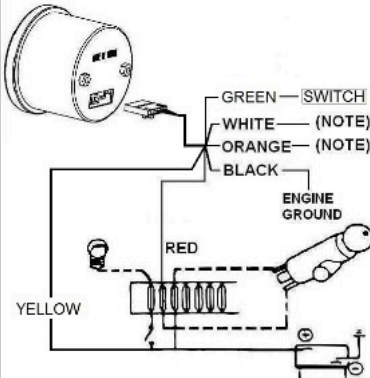
Setting the time

Press and hold the set switch down for approx 5 seconds until the Pointer begins to blink. Release set switch. Push and hold set switch To move quickly across the scale or Toggle set switch to move pointer in small increments. Once you have the pointer where you want it, wait 5 seconds to "set" and pointer will stop blinking.

5



6



7

NOTE: GAUGE REQUIRE FUNCTION

Lighting Diagram

Day Time	Night Time	Installation
White	White	White - Connect to acc. Power Orange - Do not connect
Amber	Amber	Orange - Connect to acc. Power White - Do not connect
White	Amber	White - Connect to acc. Power Orange - connect to parking lamp
Amber	White	Orange - Connect to acc. Power White - connect to parking lamp

8

