

# Digital dual temp gauge

A. INPUT RESISTANCE: 68600 ~ 316 Ω

B. UNITS TYPE: °C / °F

C. TEMP GAUGE DISPLAY: DIGITAL TYPE → 20 ~ 150°C ( 68°F ~ 302°F)

D. DPI OF DIGITAL DISPLAY= 1°C / 1°F

E. IF TEMP GAUGE CAN NOT READ THE TEMP SENSOR SIGNAL, THE DIGITAL NUMBER WILL COUNT DOWN TO "- -" AND FLASHING FOR WARNING.

## INSTALLATION INSTRUCTIONS:

GAUGE POWER WIRE HARNESS:

Red-12v Ignition Switch (+)

Black- Engine Ground

Orange- Optional Headlamp 12v (+)

SENOSR WIRE HARNESS :

DIGITAL TEMP UPPER DISPLAY

Green – Connect to temp sensor white wire

Black – Connect to temp sensor black wire

DIGITAL TEMP LOWER DISPLAY

Blue – Connect to temp sensor white wire

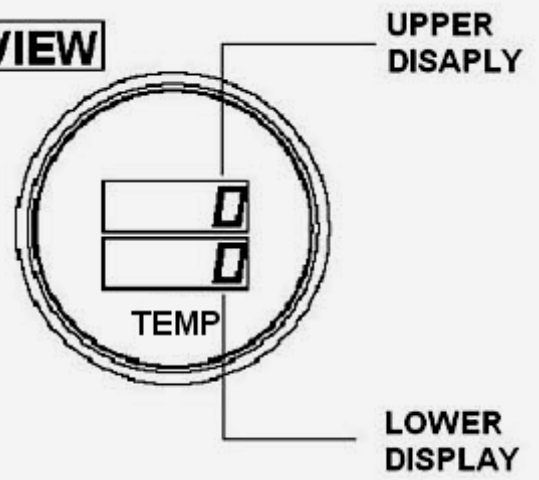
Black – Connect to temp sensor black wire

TEMP SENSOR :

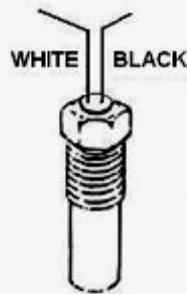
White - Connect to gauge green (Blue) wire.

Black – Connect to gauge black wire.

**FRONT VIEW**



**TEMP SENSOR**



1. Disconnect the negative battery cable.
2. Connect the orange wire to the head lamp switch to dim the gauge when the headlamps are turned on.
3. Connect the red wire to 12 volt switched source. When wiring this connection install a 3 amp fuse within 20 inches of the source. For easy installation in the fuse panel you can get an "add a circuit" which looks like a fuse with an additional wire attached; this is available at a local auto parts store.
5. The green (Blue) wire needs to be connected to the white wire of the sender.
6. Connect the Black Wire need to be connected to any ground connection, or you can run a wire to the negative side of the battery.
7. Reconnect the negative battery cable.

**BACK VIEW**

