

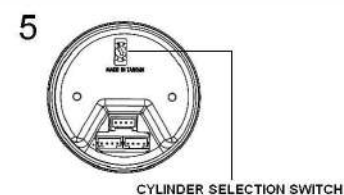
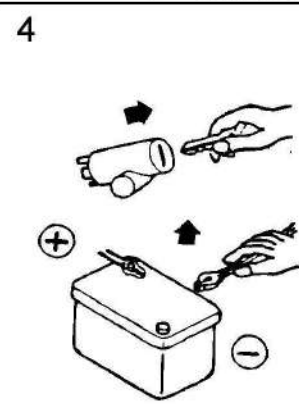
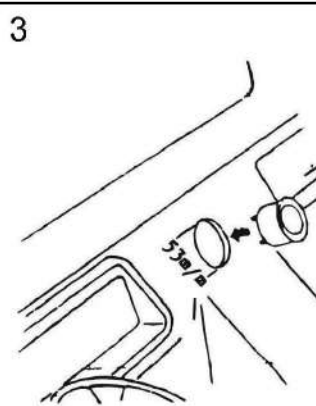
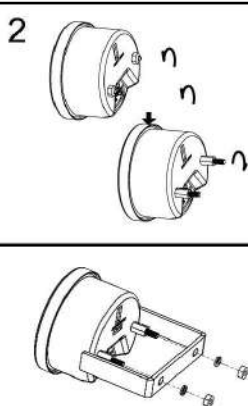
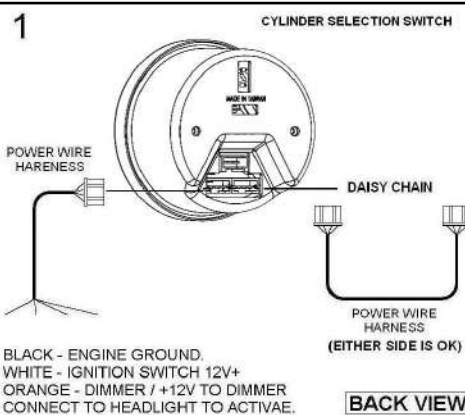
INSTALLATION INSTRUCTIONS

ELECTRICAL GAUGES W/ OUTER 30 LED

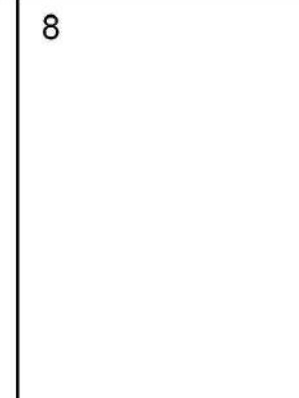
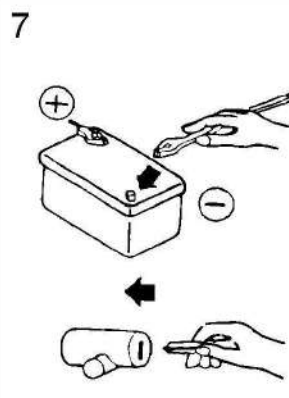
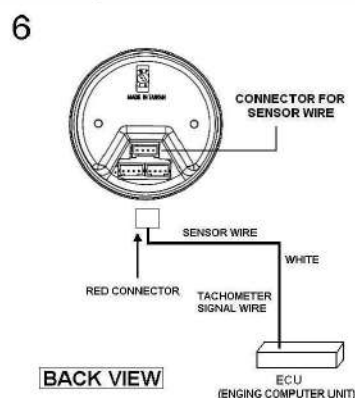
52mm DIGITAL OLED DISPLAY SERIES

Tachometer

DIGITAL TACHOMETER GAUGE DISPLAY RANGE:
0 ~ 10000 RPM

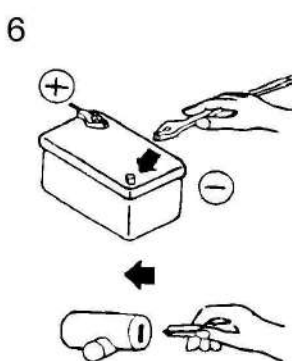
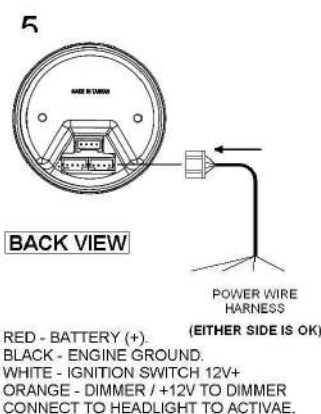
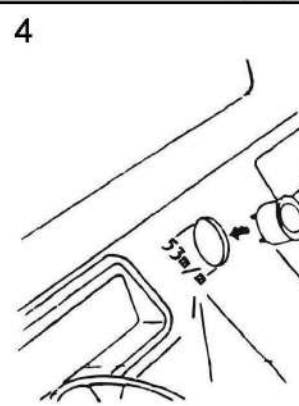
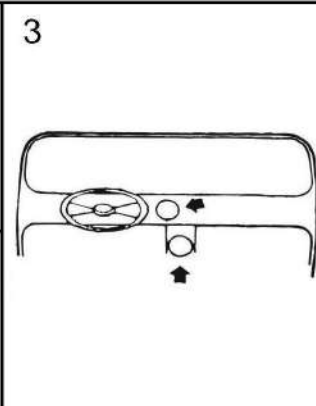
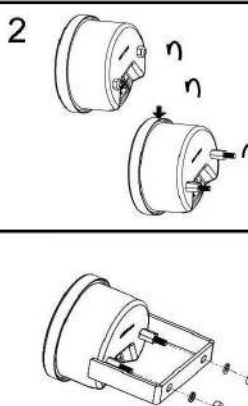
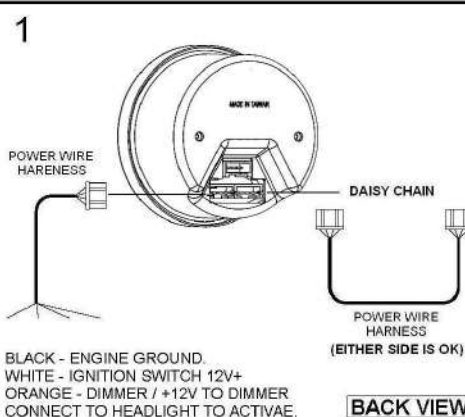


1. Selecting Number of Cylinders:
Setting the tachometer for 4, 6 or 8 (4, 6 or 3) cylinder operation is achieved simply by sliding the switch, located on back of the tachometer body, to coincide with the appropriate number of cylinders of the engine.
2. Switch position:
0=10 cylinders, 1=1 cylinders, 2 = 2 cylinders
3=3 cylinders, 4=4 cylinders, 5=cylinders,.....
3. When setting the number of cylinders for a rotary engine, set the cylinders number selection to 4 cylinders for 2 rotors, and to 6 cylinders for 3 rotors.
4. The red or black wire MUST be removed before adjustment to the cylinder setting is made from the cylinder selector switch.



Voltmeter

DIGITAL VOLTS GAUGE DISPLAY RANGE:
8 ~ 18 V



7