

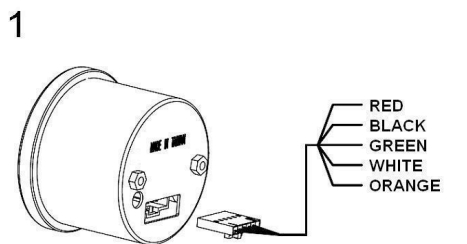
ELECTRICAL GAUGES

SMOKE LENS SERIES AMBER RED & SUPER WHITE LED DISPLAY

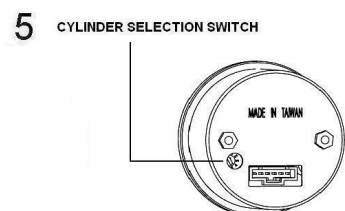
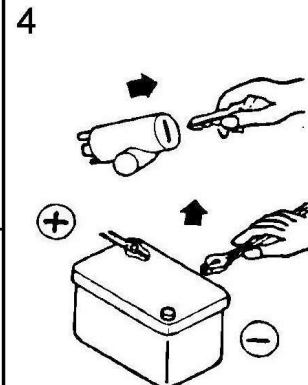
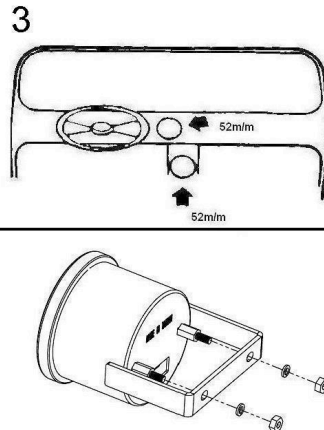
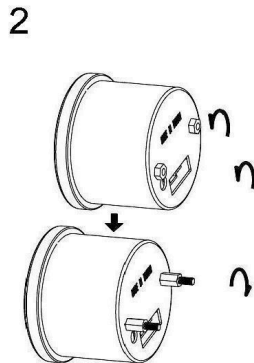
(270° SCALE)

Tachometer

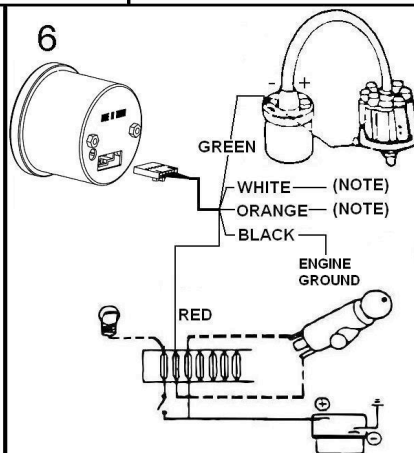
OPENING CEREMONY



RED - TO IGNITION SWITCH 12V(+)
BLACK - BATTERY (-)
GREEN - ON STANDARD IGNITION GREEN WIRE ATTACHES TO COIL NEGATIVE(-)
WHITE - NOTE
ORANGE - NOTE

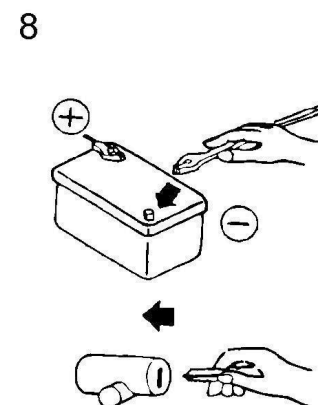


1. Selecting Number of Cylinders:
Setting the tachometer for 4, 6 or 8 (4, 6 or 3) cylinder operation is achieved simply by sliding the switch, located on back of the tachometer body, to coincide with the appropriate number of cylinders of the engine.
2. Switch position:
0=10 cylinders, 1=1 cylinders, 2=2 cylinders
3=3 cylinders, 4=4 cylinders, 5=cylinders,
3. When setting the number of cylinders for a rotary engine, set the cylinders number selection to 4 cylinders for 2 rotors, and to 6 cylinders for 3 rotors.
4. The red or black wire MUST be removed before adjustment to the engine setting is made from the cylinder selector switch.



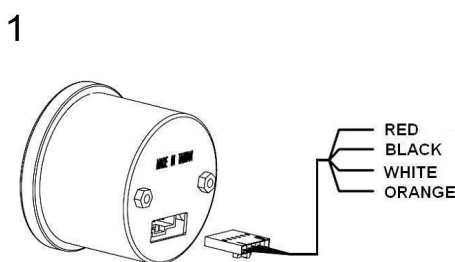
NOTE: GAUGE REQUIRE FUNCTION

REQUIRE FUNCTION		INSTALLATION
DAY TIME	NIGHT TIME	
WHITE SCALE	WHITE SCALE	WHITE WIRE→connect to ACC. AMBER WIRE→NO connect
AMBER SCALE	AMBER SCALE	WHITE WIRE→NO connect AMBER WIRE→connect to ACC.
WHITE SCALE	AMBER SCALE	WHITE WIRE→ connect to ACC AMBER WIRE→connect to PARKING LAMP.
AMBER SCALE	WHITE SCALE	WHITE WIRE→connect to PARKING LAMP AMBER WIRE→connect to ACC.

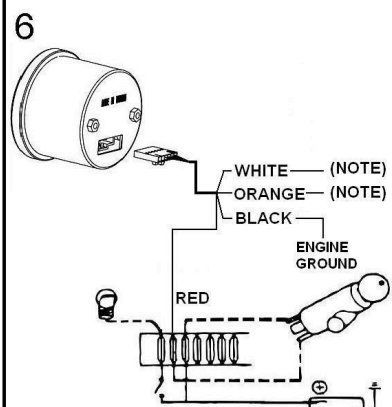
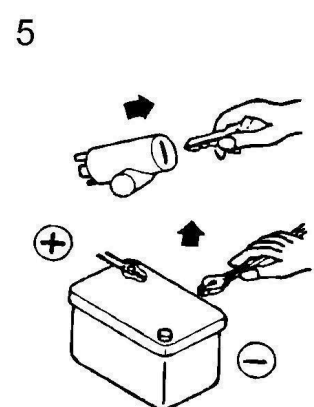
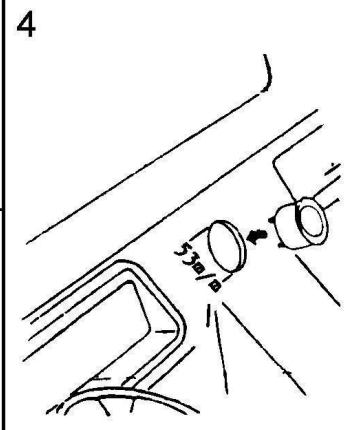
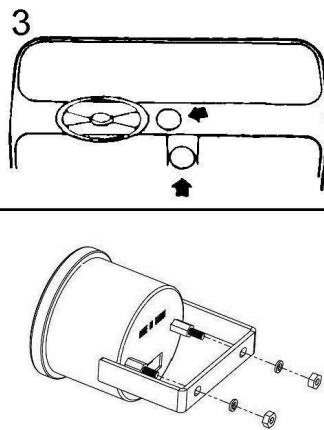
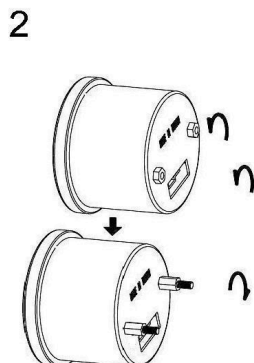


Voltmeter

OPENING CEREMONY



RED - TO IGNITION SWITCH 12V(+)
BLACK - BATTERY (-)
WHITE - NOTE
ORANGE - NOTE



NOTE: GAUGE REQUIRE FUNCTION

REQUIRE FUNCTION		INSTALLATION
DAY TIME	NIGHT TIME	
WHITE SCALE	WHITE SCALE	WHITE WIRE→connect to ACC. AMBER WIRE→NO connect
AMBER SCALE	AMBER SCALE	WHITE WIRE→NO connect AMBER WIRE→connect to ACC.
WHITE SCALE	AMBER SCALE	WHITE WIRE→ connect to ACC AMBER WIRE→connect to PARKING LAMP.
AMBER SCALE	WHITE SCALE	WHITE WIRE→connect to PARKING LAMP AMBER WIRE→connect to ACC.

